

---

AIC-PMG  
& ICOM-CC PMWG

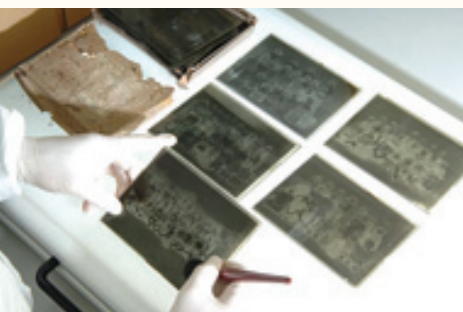
**PHOTOGRAPHS  
CONSERVATION  
JOINT MEETING**

WELLINGTON, 2013  
11–15 FEBRUARY\*  
NATIONAL LIBRARY  
OF NEW ZEALAND



PRELIMINARY NOTICE

---



The American Institute for Conservation – Photographic Materials Group (AIC-PMG) and the International Council of Museums Conservation Committee Photographic Materials Working Group (ICOM-CC PMWG) are pleased to announce they will be holding a Joint Meeting in Wellington NZ, February 2013.

This will be the second time the two organisations have met together, following the first Joint Meeting in Rochester, 2007. Each organisation will share in the programme and the event will be hosted at the National Library of New Zealand. Please plan now to attend.

## DIVERSITY AND DEPTH

The Joint Meeting will have the most varied and expert participants. Delegates represent the greatest number of countries and individuals doing the most diverse and comprehensive work in photographs conservation. It will be the best audience to hear your papers, read your poster and engage with your questions and ideas.

The meeting will be exceptional as it's the first time either group has met in the southern hemisphere. Meeting together in Wellington will be unique. With a dense clustering of experts, it will be of value to curators and collection managers as well as conservators and artists. The meeting will be as valuable as attending two international meetings for the cost, time and effort of one.

**PHOTOGRAPHS:** LEFT Cleaning gelatin glass plates, hygiene room, National Library. CENTRE Arthur River, Mitre Peak and Milford Sound. R. P. Moore, ca. 1923-28 cellulose nitrate negative: Pan-1036-F, Alexander Turnbull Library. RIGHT Wellington City and harbour.

## WELCOME TO WELLINGTON

A warm welcome awaits you! [www.wellingtonnz.com](http://www.wellingtonnz.com)

Wellington is a small, vibrant and spectacular harbour city surrounded by steep hills covered in regenerating native forest. It is New Zealand's capital, in both the political and cultural sense, being home to the National Library, [www.natlib.govt.nz](http://www.natlib.govt.nz), Archives New Zealand [www.archives.govt.nz](http://www.archives.govt.nz) and the national museum, Te Papa, [www.tepapa.govt.nz](http://www.tepapa.govt.nz) and the NZ Film Archive [www.filmarchive.org.nz](http://www.filmarchive.org.nz).

The city is compact enough to walk across during your lunch hour and many people use the waterfront walk as one of the country's most attractive home routes. There is good public transport and the airport is fifteen minutes from the city centre. A range of hotels is within a few minutes' walk from the conference venue. The city has modern amenities such as free WiFi and a fine choice of restaurants and cafés. For those who enjoy impressive views there are plenty of hills, as well as a cable car for those less inclined to walk.

There are ample recreational options (ideal for families): the botanic gardens, nature sanctuary, dealer art galleries, beaches, boutique shopping, or the harbour island Matiu/Somes – where you can see rare birds or the dinosaur lizard (the tuatara). Day trips can be arranged to nearby award-winning vineyards of Martinborough and Marlborough. And for fans of the movies *King Kong*, *Avatar*, *Tintin*, *The Hobbit* or *Lord of the Rings*, the Weta Cave film studio outlet is open for visits, and there are *LOTR* location tours. Wellington is hometown to the Flight of the Conchords and the Wellington International Ukulele Orchestra.

February in the southern hemisphere is late summer and Wellington will be warm – but not too hot. It's an ideal time to combine some recreational time with a work trip. Apricots and strawberries will be in season. You may want to pack a sunhat.

---

**Please plan early to attend.** Arrange your leave, plan your budget and start saving now. Many of those on salaries may need to contribute to the costs as the travel distance is more than domestic flights. The flight is a long one although many across the Pacific are overnight. We hope to see you and look forward to welcoming you to Wellington!

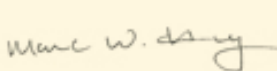
The PMG Winter Meeting is a biennial and ICOM-CC Interim Meeting is a triennial meeting. Further information including themes, calls for papers, travel and accommodation information and registration details will be linked to the websites of [PMG](#) and [PMWG](#).

## EVENT INFORMATION

AIC-PMG & ICOM-CC PMWG Photographs Conservation Joint Meeting  
11–15 February\* 2013

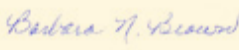
National Library of New Zealand, Corner Molesworth and Aitken Streets  
PO Box 1467, Wellington 6140, New Zealand

\*Working dates. The Meeting is planned for three days and two days are planned for workshops/tours.



**Marc W. Harnly**

Co-ordinator, ICOM-CC  
Photographic Materials  
Working Group



**Barbara N. Brown**

Chair, AIC Photographic  
Materials Group



**Mark Strange**

2013 PMG & PMWG  
Joint Meeting Convenor



---

PHOTOGRAPH ON FRONT: Mts Tarawera and Ruawahia from Te Ariki (after the eruption of Mt Tarawera), George Valentine. 1886. Albumen print PA7-54-01, Alexander Turnbull Library.

---